

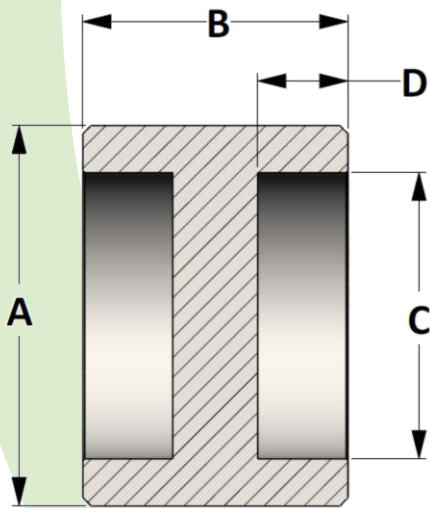
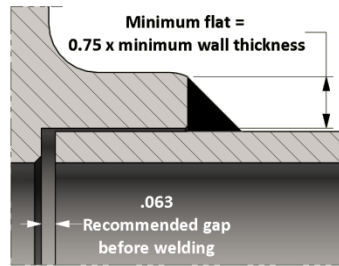
Blind Coupling

ISO 9001:2008 & PED Certified
Canadian Registered in all provinces

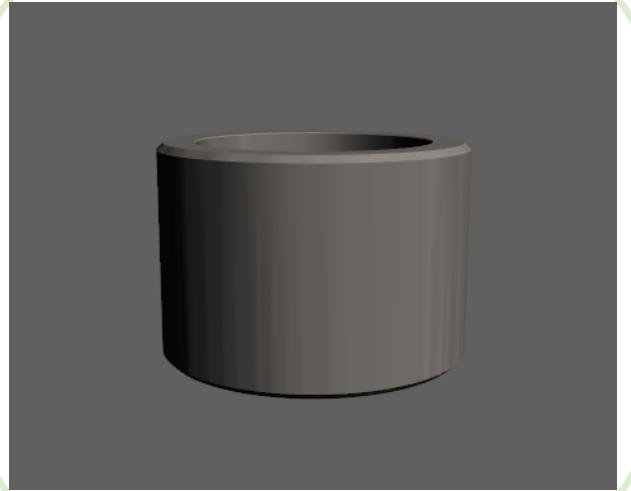
Material: Available in a complete range of Carbon Steels, Stainless Steels, Alloy Steels and Non-ferrous metals certified to ASTM, ASME, and Military standards.

Sizes: 1/8" - 12" in CL 3000 • 1/8" - 6" in CL 6000 • 1/8" - 4" in CL 9000
Also available in tube sizes and special lengths

Welding Gap and Minimum Flat Dimension for Socket Weld Fittings



Active
3D
Model



All dimensions are in inches • Weights are based on Carbon Steel

PIPE SIZE	CLASS 3000 – Figure No. 13159												
	1/8	1/4	3/8	1/2	3/4	1	1-1/4	1-1/2	2	2-1/2	3	3-1/2	4
A	0.750	0.875	1.063	1.250	1.500	1.813	2.250	2.500	3.000	3.625	4.313	5.000	5.500
B	1.125	1.125	1.125	1.250	1.437	1.563	1.563	1.563	2.063	2.063	2.063	2.313	2.313
C	0.426	0.560	0.693	0.859	1.071	1.335	1.682	1.922	2.410	2.910	3.536	4.036	4.545
D	0.438	0.438	0.438	0.438	0.531	0.531	0.531	0.531	0.656	0.656	0.656	0.781	0.781
LBS	0.11	0.13	0.19	0.29	0.45	0.72	1.09	1.30	2.44	3.57	4.90	7.22	8.41

PIPE SIZE	CLASS 6000 – Figure No. 16159												
	1/8	1/4	3/8	1/2	3/4	1	1-1/4	1-1/2	2	2-1/2	3	3-1/2	4
A	0.875	1.000	1.250	1.500	1.750	2.000	2.500	2.750	3.625	4.250	5.000	6.000	6.000
B	1.125	1.125	1.125	1.250	1.437	1.563	1.563	1.563	2.063	2.063	2.063	2.313	2.313
C	0.426	0.560	0.693	0.859	1.071	1.335	1.682	1.922	2.410	2.910	3.536	4.046	4.545
D	0.438	0.438	0.438	0.438	0.531	0.531	0.531	0.531	0.656	0.656	0.656	0.781	0.781
LBS	0.16	0.19	0.30	0.48	0.71	0.97	1.51	1.76	4.35	5.83	7.84	12.90	11.38

PIPE SIZE	CLASS 9000 – Figure No. 19159												
	1/8	1/4	3/8	1/2	3/4	1	1-1/4	1-1/2	2	2-1/2	3	3-1/2	4
A	1.000	1.250	1.750	1.750	2.000	2.500	2.750	3.000	3.625	4.500	5.500	6.000	6.500
B	1.125	1.125	1.125	1.250	1.437	1.563	1.563	1.563	2.063	2.063	2.063	2.313	2.313
C	0.426	0.560	0.693	0.859	1.071	1.335	1.682	1.922	2.410	2.910	3.536	4.036	4.545
D	0.438	0.438	0.438	0.438	0.531	0.531	0.531	0.531	0.656	0.656	0.656	0.781	0.781
LBS	0.22	0.33	0.67	0.71	1.01	1.76	1.97	2.26	4.35	6.84	10.26	12.90	14.60