



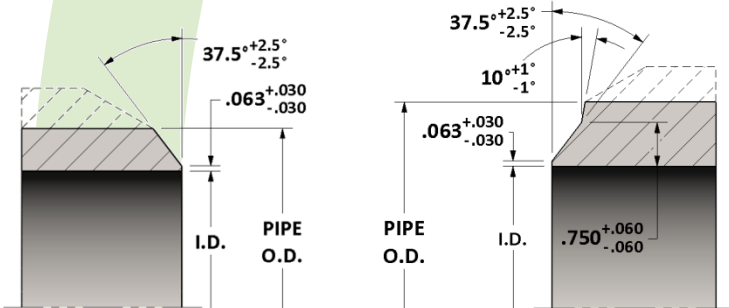
Butt Weld Cap

Specification: Dimensions per ASME B16.9
Weld bevels per ASME B16.25

Material: Available in a complete range of Carbon Steels, Stainless Steels, Alloy Steels and Non-ferrous metals certified to ASTM, ASME, and Military standards.

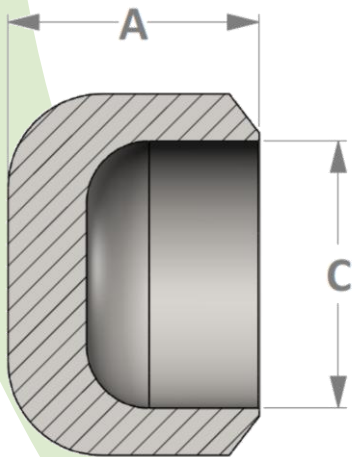
Sizes: 1/8" – 4" in all Schedules
Also available in other requirements such as special wall thickness

Butt Weld Ends Details

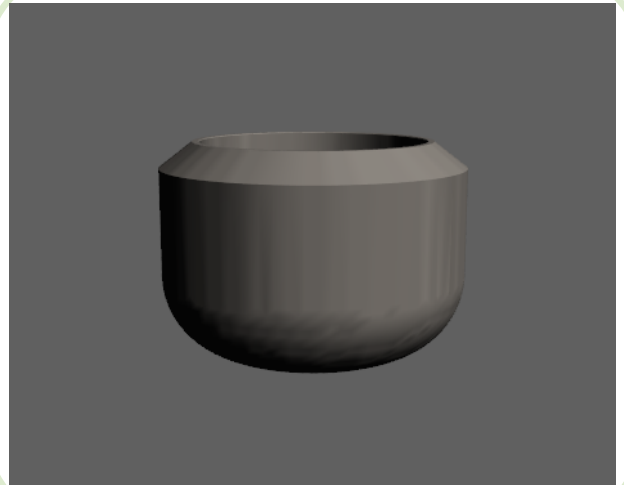


Weld bevels for wall thickness below 0.880"

Weld bevels for wall thickness above 0.880"



Active
3D
Model



All dimensions are in inches • Weights are based on Carbon Steel

PIPE SIZE	STD/S40 – Figure No. 45010			XH/S80 – Figure No. 48010			S160 – Figure No. 52010			XXH – Figure No. 53010		
	A	C	LBS	A	C	LBS	A	C	LBS	A	C	LBS
1/2	1.000	0.622	0.09	1.000	0.546	0.11	1.000	0.464	0.13	1.000	0.252	0.16
3/4	1.000	0.824	0.11	1.000	0.742	0.16	1.000	0.612	0.19	1.000	0.434	0.23
1	1.500	1.049	0.30	1.500	0.957	0.35	1.500	0.815	0.43	1.500	0.599	0.54
1-1/4	1.500	1.380	0.37	1.500	1.278	0.47	1.500	1.160	0.58	1.500	0.896	0.76
1-1/2	1.500	1.610	0.48	1.500	1.500	0.63	1.500	1.338	0.78	1.500	1.100	0.97
2	1.500	2.067	0.63	1.500	1.939	0.83	1.750	1.689	1.37	1.750	1.503	1.55
2-1/2	1.500	2.469	1.11	1.500	2.323	1.34	2.000	2.125	2.17	2.000	1.771	2.77
3	2.000	3.068	1.79	2.000	2.900	2.33	3.000	2.624	4.45	3.000	2.300	5.51
4	2.500	4.026	3.23	2.500	3.826	4.38	3.000	3.438	7.22	3.000	3.152	8.72