



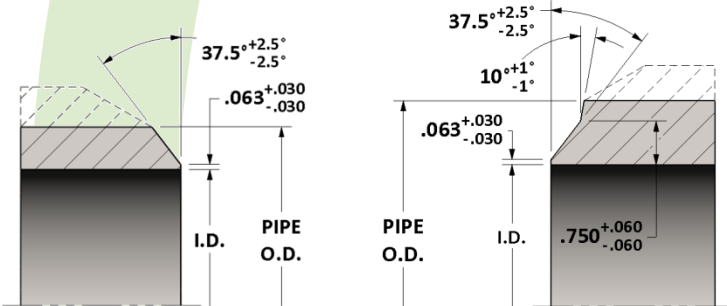
Butt Weld Eccentric Reducer

Specification: Dimensions per ASME B16.9
Weld levels per ASME B16.25

Material: Available in a complete range of Carbon Steels, Stainless Steels, Alloy Steels and Non-ferrous metals certified to ASTM, ASME, and Military standards.

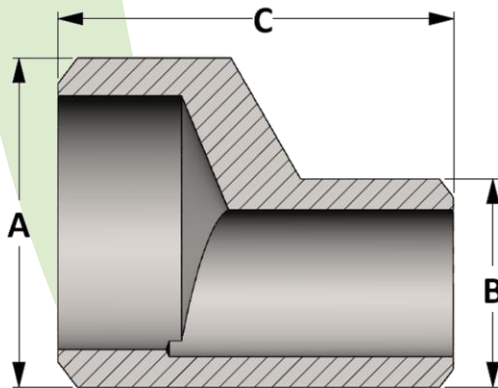
Sizes: 1/4" - 8" in S40/STD, S80/XH, S160 & XXH
Also available in special pipe schedules and split schedules

Butt Weld Ends Details

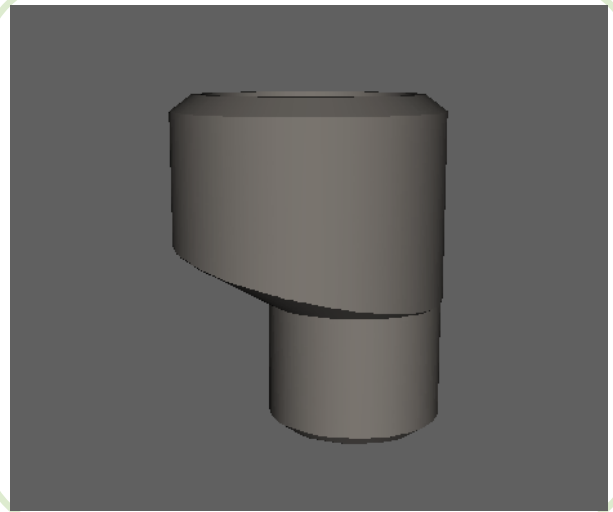


Weld levels for wall thickness below 0.880"

Weld levels for wall thickness above 0.880"



Active
3D
Model



All dimensions are in inches • Weights are based on Carbon Steel

Pipe Size	Dimensions			Weights				
	A	B	C	STD	XH	S160	XXH	
1/2	1/4	0.840	0.540	1.500	0.09	0.10	0.15	---
	3/8	0.840	0.675	1.500	0.09	0.09	0.15	0.18
3/4	1/4	1.050	0.540	1.500	0.15	0.15	0.20	---
	3/8	1.050	0.675	1.500	0.14	0.14	0.21	0.25
1	1/2	1.050	0.840	1.500	0.14	0.14	0.22	0.28
	1/4	1.315	0.540	2.000	0.30	0.27	0.37	---
	3/8	1.315	0.675	2.000	0.28	0.27	0.37	0.48
	1/2	1.315	0.840	2.000	0.27	0.27	0.38	0.50
1-1/4	3/4	1.315	1.050	2.000	0.26	0.26	0.41	0.54
	1/4	1.660	0.540	2.000	0.40	0.45	0.57	---
	3/8	1.660	0.675	2.000	0.39	0.43	0.56	0.70
	1/2	1.660	0.840	2.000	0.37	0.42	0.56	0.71
1-1/2	3/4	1.660	1.050	2.000	0.36	0.39	0.57	0.73
	1	1.660	1.315	2.000	0.36	0.39	0.60	0.78
	3/8	1.900	0.675	2.500	0.65	0.65	0.88	---
	1/2	1.900	0.840	2.500	0.63	0.64	0.87	1.14
2	3/4	1.900	1.050	2.500	0.60	0.60	0.88	1.14
	1	1.900	1.315	2.500	0.58	0.59	0.91	1.19
	1-1/4	1.900	1.660	2.500	0.56	0.56	0.92	1.26
	3/4	2.375	1.050	3.000	1.05	1.05	1.68	2.03
2	1	2.375	1.315	3.000	1.01	1.01	1.66	2.05
	1-1/4	2.375	1.660	3.000	0.95	0.95	1.61	2.07
	1-1/2	2.375	1.900	3.000	0.92	0.92	1.66	2.10

Pipe Size	Dimensions			Weights				
	A	B	C	STD	XH	S160	XXH	
2-1/2	3/4	2.875	1.050	3.500	1.79	2.00	2.59	3.25
	1	2.875	1.315	3.500	1.73	1.91	2.59	3.27
	1-1/4	2.875	1.660	3.500	1.61	1.76	2.47	3.26
	1-1/2	2.875	1.900	3.500	1.54	1.68	2.50	3.28
3	2	2.875	2.375	3.500	1.46	1.53	2.68	3.40
	1	3.500	1.315	3.500	2.74	3.03	4.15	4.85
	1-1/4	3.500	1.660	3.500	2.52	2.79	3.93	4.74
	1-1/2	3.500	1.900	3.500	2.39	2.63	3.86	4.68
3-1/2	2	3.500	2.375	3.500	2.15	2.33	3.83	4.61
	2-1/2	3.500	2.875	4.000	2.18	2.30	3.82	5.00
	1-1/2	4.000	1.900	4.000	3.44	3.79	---	6.45
	2	4.000	2.375	4.000	3.11	3.39	---	6.33
4	2-1/2	4.000	2.875	4.000	3.07	3.29	---	6.23
	3	4.000	3.500	4.000	2.95	3.06	---	7.09
	1-1/2	4.500	1.900	4.500	4.68	4.68	7.02	8.11
	2	4.500	2.375	4.500	4.18	4.18	6.80	7.85
6	2-1/2	4.500	2.875	4.500	3.98	3.98	6.57	8.10
	3	4.500	3.500	4.500	3.63	3.63	6.64	8.24
	3-1/2	4.500	4.000	4.500	3.51	3.51	---	8.57
	3	6.625	3.500	5.500	12.76	12.76	20.28	22.18
6	3-1/2	6.625	4.000	5.500	11.68	11.67	---	21.71
	4	6.625	4.500	5.500	10.72	10.72	19.48	21.48
	5	6.625	5.563	5.500	9.18	9.18	19.76	21.75