

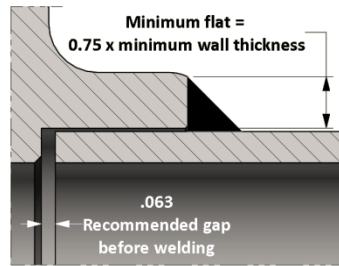
# Socket Weld Boss

Specification: ASME B16.11

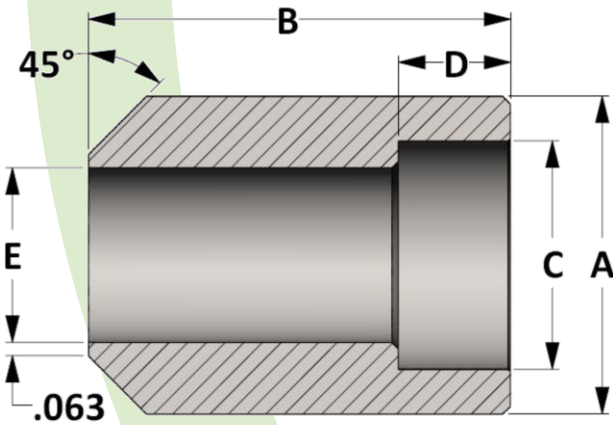
**Material:** Available in a complete range of Carbon Steels, Stainless Steels, Alloy Steels and Non-ferrous metals certified to ASTM, ASME, and Military standards.

**Sizes:** 1/8" - 2" in CL 3000 and CL 6000 • 1/2" - 2" in CL 9000  
Also available in special pipe schedules/class rating, and special lengths

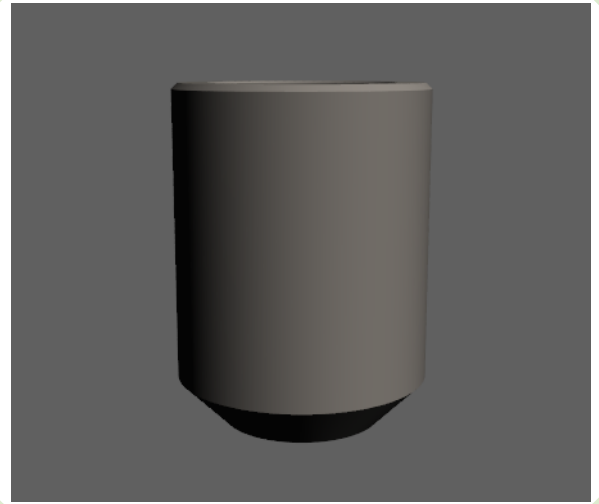
## Welding Gap and Minimum Flat Dimension for Socket Weld Fittings



Socket Weld Pressure Class	Pipe Schedule
Class 3000	S80/XH
Class 6000	S160
Class 9000	XXH



Active  
3D  
Model



All dimensions are in inches • Weights are based on Carbon Steel

PIPE SIZE	CLASS 3000 – Figure No. 13022							
	1/4	3/8	1/2	3/4	1	1-1/4	1-1/2	2
A	0.875	1.063	1.250	1.500	1.813	2.250	2.500	3.000
B	1.057	1.127	1.317	1.471	1.651	1.721	1.781	2.276
C	0.560	0.693	0.859	1.071	1.335	1.682	1.922	2.410
D	0.438	0.438	0.438	0.531	0.531	0.531	0.531	0.656
E	0.364	0.493	0.622	0.824	1.049	1.380	1.610	2.067
LBS	0.12	0.18	0.28	0.42	0.65	0.98	1.20	1.98

PIPE SIZE	CLASS 6000 – Figure No. 16022							
	1/4	3/8	1/2	3/4	1	1-1/4	1-1/2	2
A	1.000	1.250	1.500	1.750	2.000	2.500	2.750	3.625
B	1.057	1.127	1.317	1.471	1.651	1.721	1.781	2.276
C	0.560	0.693	0.859	1.071	1.335	1.682	1.922	2.410
D	0.438	0.438	0.438	0.531	0.531	0.531	0.531	0.656
E	0.250	0.359	0.466	0.614	0.815	1.160	1.338	1.689
LBS	0.17	0.27	0.44	0.63	0.89	1.36	1.64	3.68

PIPE SIZE	CLASS 9000 – Figure No. 19022							
	1/4	3/8	1/2	3/4	1	1-1/4	1-1/2	2
A	---	---	1.750	2.000	2.500	2.750	3.000	3.625
B	---	---	1.317	1.471	1.651	1.721	1.781	2.267
C	---	---	0.859	1.071	1.335	1.682	1.922	2.410
D	---	---	0.438	0.531	0.531	0.531	0.531	0.656
E	---	---	0.252	0.434	0.599	0.896	1.100	1.503
LBS	---	---	0.55	0.79	1.33	1.65	1.95	3.67