



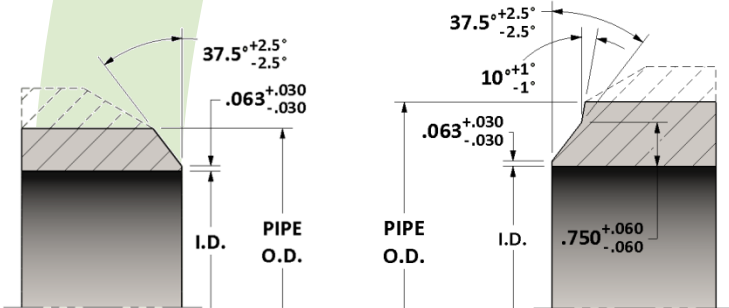
Specification: Dimensions per ASME B16.9 and MSS-SP43
Weld levels per ASME B16.25

Material: Available in a complete range of Carbon Steels, Stainless Steels, Alloy Steels and Non-ferrous metals certified to ASTM, ASME, and Military standards.

Sizes: 1/2" – 24" in all Schedules

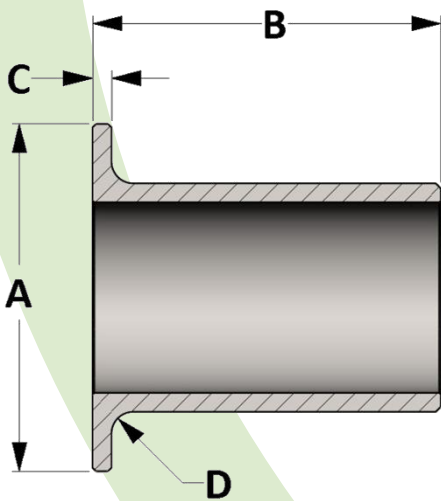
*Type 1/Type 2 or Short/Long must be specified by the customer
C dimension is equal to the schedule wall thickness

Butt Weld Ends Details



Weld levels for wall thickness below 0.880"

Weld levels for wall thickness above 0.880"



Active
3D
Model



All dimensions are in inches • Weights are based on Carbon Steel

PIPE SIZE	A	B16.9 & SP43 Type A	MSS SP43 Type B	S10				STD/S40				XH/S80			
				ASME B16.9 MSS-SP43 Short Pattern		ASME B16.9 Long Pattern		ASME B16.9 MSS-SP43 Short Pattern		ASME B16.9 Long Pattern		ASME B16.9 MSS-SP43 Short Pattern		ASME B16.9 Long Pattern	
				B	LBS	B	LBS	B	LBS	B	LBS	B	LBS	B	LBS
1/2	1.375	0.125	0.030	2.000	0.13	3.000	0.19	2.000	0.17	3.000	0.24	2.000	0.22	3.000	0.31
3/4	1.688	0.125	0.030	2.000	0.18	3.000	0.25	2.000	0.23	3.000	0.33	2.000	0.31	3.000	0.43
1	2.000	0.125	0.030	2.000	0.29	4.000	0.52	2.000	0.35	4.000	0.63	2.000	0.45	4.000	0.82
1-1/4	2.500	0.188	0.030	2.000	0.39	4.000	0.69	2.000	0.49	4.000	0.87	2.000	0.65	4.000	1.15
1-1/2	2.875	0.250	0.030	2.000	0.46	4.000	0.81	2.000	0.60	4.000	1.06	2.000	0.81	4.000	1.42
2	3.625	0.313	0.030	2.500	0.73	6.000	1.50	2.500	1.02	6.000	2.09	2.500	1.41	6.000	2.88
2-1/2	4.125	0.313	0.030	2.500	0.97	6.000	2.00	2.500	1.61	6.000	3.30	2.500	2.14	6.000	4.38
3	5.000	0.375	0.030	2.500	1.25	6.000	2.51	2.500	2.20	6.000	4.41	2.500	2.99	6.000	5.99
4	6.188	0.488	0.030	3.000	1.89	6.000	3.30	3.000	3.66	6.000	6.36	3.000	5.11	6.000	8.87