

# Threaded Couplet

**Specification:** ASME B16.11 & ASME B31.1

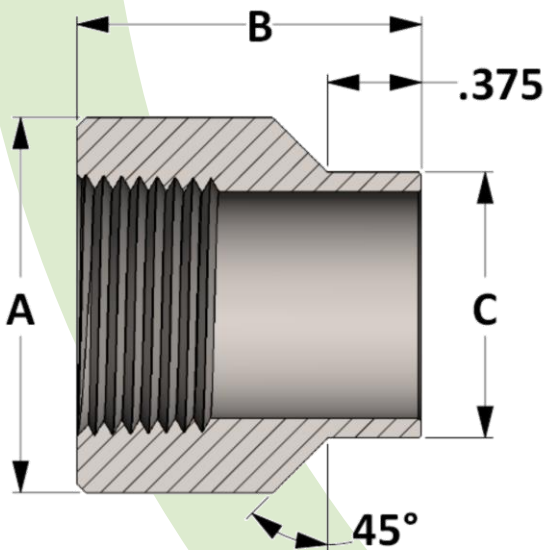
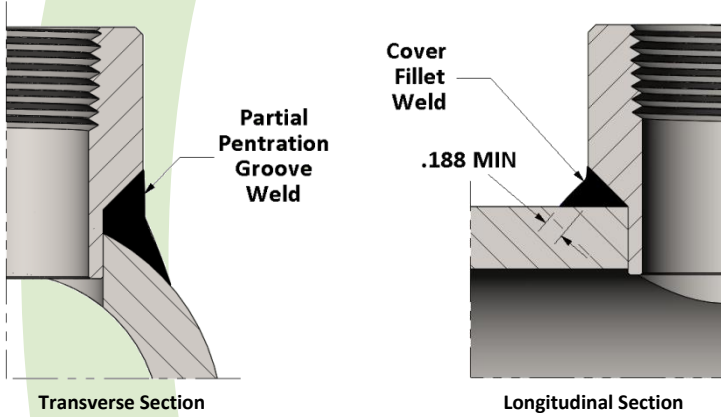
**Material:** Available in a complete range of Carbon Steels, Stainless Steels, Alloy Steels and Non-ferrous metals certified to ASTM, ASME, and Military standards.

**Sizes:** 1/4" - 3" in CL 3000 • 1/8" - 3" in CL 6000

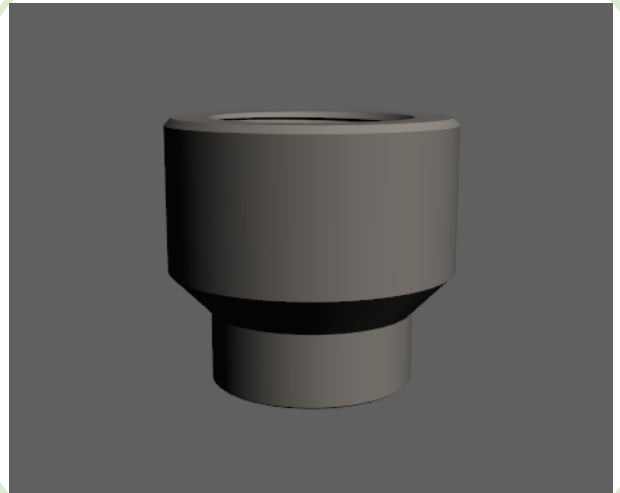
Also available in special pipe schedules/class rating, and special lengths

| Socket Weld Pressure Class | Pipe Schedule |
|----------------------------|---------------|
| Class 3000                 | S160          |
| Class 6000                 | XXH           |

## Welding onto Header Pipe



Active  
3D  
Model



All dimensions are in inches • Weights are based on Carbon Steel

| PIPE SIZE | CLASS 3000 – Figure No. 03018 |       |       |       |       |       |       |       |       |       |       |
|-----------|-------------------------------|-------|-------|-------|-------|-------|-------|-------|-------|-------|-------|
|           | 1/8                           | 1/4   | 3/8   | 1/2   | 3/4   | 1     | 1-1/4 | 1-1/2 | 2     | 2-1/2 | 3     |
| A         | ---                           | 0.938 | 1.063 | 1.312 | 1.500 | 1.813 | 2.188 | 2.500 | 3.000 | 3.625 | 4.250 |
| B         | ---                           | 1.188 | 1.188 | 1.312 | 1.375 | 1.688 | 1.875 | 2.000 | 2.250 | 2.500 | 2.750 |
| C         | ---                           | 0.688 | 0.812 | 0.938 | 1.063 | 1.312 | 1.688 | 1.938 | 2.438 | 2.875 | 3.500 |
| LBS       | ---                           | 0.14  | 0.16  | 0.28  | 0.29  | 0.56  | 0.93  | 1.24  | 1.79  | 2.92  | 3.98  |

| PIPE SIZE | CLASS 6000 – Figure No. 06018 |       |       |       |       |       |       |       |       |       |       |
|-----------|-------------------------------|-------|-------|-------|-------|-------|-------|-------|-------|-------|-------|
|           | 1/8                           | 1/4   | 3/8   | 1/2   | 3/4   | 1     | 1-1/4 | 1-1/2 | 2     | 2-1/2 | 3     |
| A         | 0.875                         | 1.000 | 1.250 | 1.500 | 1.750 | 2.250 | 2.500 | 3.000 | 3.625 | 4.250 | 5.000 |
| B         | 1.188                         | 1.188 | 1.188 | 1.312 | 1.375 | 1.688 | 1.875 | 2.000 | 2.250 | 2.500 | 2.750 |
| C         | 0.563                         | 0.688 | 0.812 | 0.938 | 1.063 | 1.312 | 1.688 | 1.938 | 2.438 | 2.875 | 3.500 |
| LBS       | 0.12                          | 0.16  | 0.30  | 0.34  | 0.43  | 0.92  | 1.19  | 2.91  | 2.89  | 4.52  | 6.83  |