

# Hex Nipple

ISO 9001 & PED Certified  
Canadian Registered in all provinces

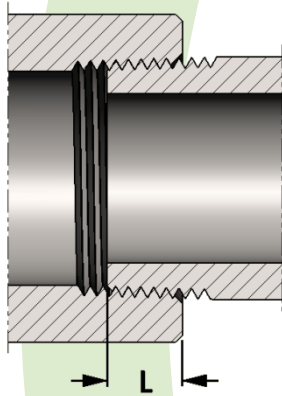
**Material:** Available in a complete range of Carbon Steels, Stainless Steels, Alloy Steels and Non-ferrous metals certified to ASTM, ASME, and Military standards.

**Sizes:** 1/8" - 4" in S40/STD, S80/XH, S160 & XXH

Also available in reducing pipe sizes, special pipe schedules and custom lengths.

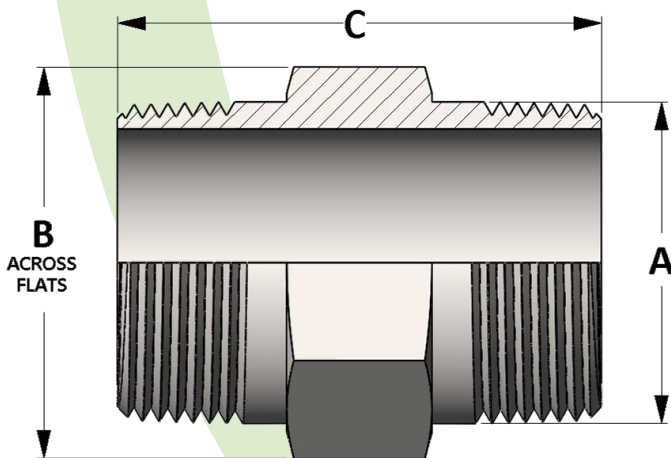
**Threads:** American National Standard Taper Pipe Threads NPT (ANSI/ASME B1.20.1-1983)

Also available in other thread forms: NPTF, NPSC, NPSM, NGT, BSPT, BSPP and in any combination. Left hand threads available upon request.

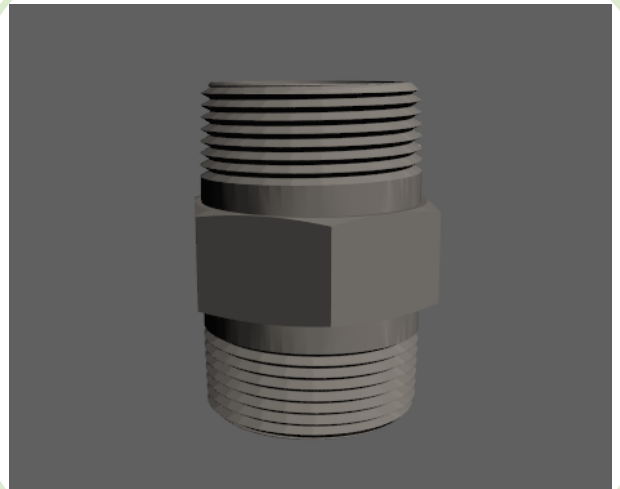


SIZE	L	SIZE	L
1/8	0.273	2	0.697
1/4	0.395	2-1/2	0.933
3/8	0.407	3	1.016
1/2	0.534	3-1/2	1.071
3/4	0.553	4	1.094
1	0.661	5	1.187
1-1/4	0.681	6	1.208
1-1/2	0.681	8	1.313

**Length of thread  
screwed into fitting**



Active  
3D  
Model



All dimensions are in inches • Weights are based on Carbon Steel

Pipe Size	A	B	C								
			Standard Lengths								
1/8	0.405	0.438	2.000	2.500	3.000	3.500	4.000	4.500	5.000	5.500	6.000
1/4	0.540	0.625	2.000	2.500	3.000	3.500	4.000	4.500	5.000	5.500	6.000
3/8	0.675	0.688	2.000	2.500	3.000	3.500	4.000	4.500	5.000	5.500	6.000
1/2	0.840	0.875	2.000	2.500	3.000	3.500	4.000	4.500	5.000	5.500	6.000
3/4	1.050	1.063	2.000	2.500	3.000	3.500	4.000	4.500	5.000	5.500	6.000
1	1.315	1.375	---	2.500	3.000	3.500	4.000	4.500	5.000	5.500	6.000
1-1/4	1.660	1.750	---	2.500	3.000	3.500	4.000	4.500	5.000	5.500	6.000
1-1/2	1.900	2.000	---	2.500	3.000	3.500	4.000	4.500	5.000	5.500	6.000
2	2.375	2.500	---	---	3.000	3.500	4.000	4.500	5.000	5.500	6.000
2-1/2	2.875	3.000	---	---	---	---	4.000	4.500	5.000	5.500	6.000
3	3.500	3.625	---	---	---	---	4.000	4.500	5.000	5.500	6.000
4	4.500	4.750	---	---	---	---	---	4.500	5.000	5.500	6.000