



Socket Weld Couplet

ISO 9001 & PED Certified
Canadian Registered in all provinces

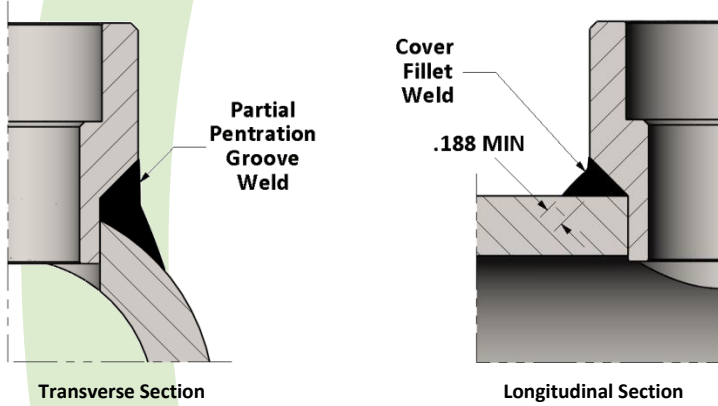
Specification: ASME B16.11 & ASME 31.1

Material: Available in a complete range of Carbon Steels, Stainless Steels, Alloy Steels and Non-ferrous metals certified to ASTM, ASME, and Military standards.

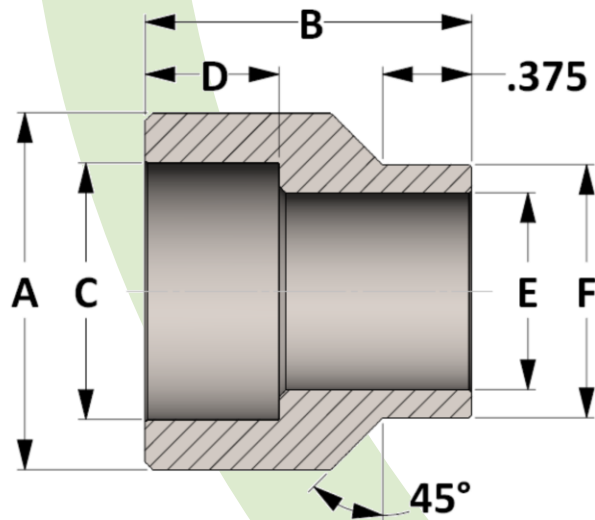
Sizes: 1/4" - 4" in CL 3000 • 1/8" - 4" in CL 6000

Also available in special pipe schedules/class rating, and special lengths

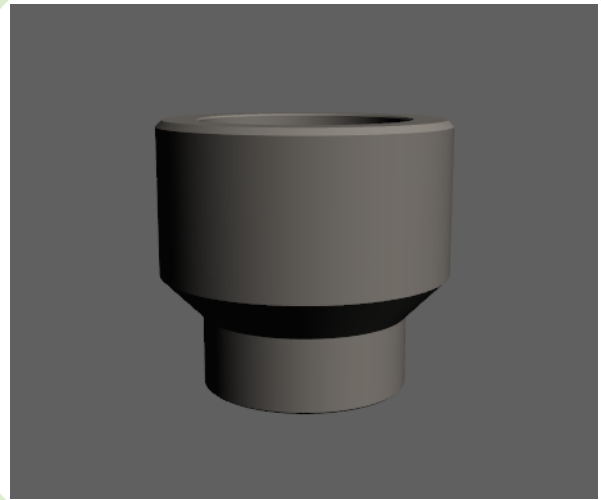
Welding onto Header Pipe



Socket Weld Pressure Class	Pipe Schedule
Class 3000	S80/XH
Class 6000	S160



Active
3D
Model



All dimensions are in inches • Weights are based on Carbon Steel

PIPE SIZE	CLASS 3000 – Figure No. 13018											
	1/8	1/4	3/8	1/2	3/4	1	1-1/4	1-1/2	2	2-1/2	3	4
A	---	0.938	1.063	1.312	1.500	1.813	2.188	2.500	3.125	3.625	4.375	5.563
B	---	1.188	1.188	1.312	1.375	1.688	1.875	2.000	2.250	2.500	2.750	3.000
C	---	0.560	0.693	0.859	1.071	1.335	1.682	1.922	2.410	2.910	3.536	4.545
D	---	0.438	0.438	0.438	0.563	0.563	0.563	0.563	0.688	0.688	0.688	1.031
E	---	0.359	0.500	0.625	0.828	1.047	1.375	1.609	2.063	2.469	3.063	4.031
F	---	0.688	0.812	0.938	1.063	1.312	1.688	1.938	2.438	2.875	3.500	4.500
LBS	---	0.14	0.16	0.27	0.30	0.56	0.88	1.20	2.05	2.92	4.57	7.25

PIPE SIZE	CLASS 6000 – Figure No. 16018											
	1/8	1/4	3/8	1/2	3/4	1	1-1/4	1-1/2	2	2-1/2	3	4
A	0.875	1.000	1.250	1.500	1.750	2.250	2.500	3.000	3.625	4.250	5.000	6.250
B	1.188	1.188	1.188	1.312	1.375	1.688	1.875	2.000	2.250	2.500	2.750	3.000
C	0.426	0.560	0.693	0.859	1.071	1.335	1.682	1.922	2.410	2.910	3.536	4.545
D	0.438	0.438	0.438	0.438	0.563	0.563	0.563	0.563	0.688	0.688	0.688	1.031
E	0.157	0.250	0.359	0.466	0.614	0.815	1.160	1.338	1.689	2.125	2.625	3.438
F	0.688	0.688	0.812	0.938	1.063	1.312	1.688	1.938	2.438	2.875	3.500	4.500
LBS	0.16	0.17	0.25	0.39	0.49	1.05	1.42	2.20	3.59	5.31	8.02	12.64