



# Socket Weld Orifice Union

ISO 9001 & PED Certified  
Canadian Registered in all provinces

**Material:** Available in a complete range of Carbon Steels, Stainless Steels, Alloy Steels and Non-ferrous metals certified to ASTM, ASME, and Military standards.

**Orifice Plate:** CL 3000 available as tabbed or un-tabbed.  
CL 6000 available as un-tabbed only.  
Orifice hole per customer request.

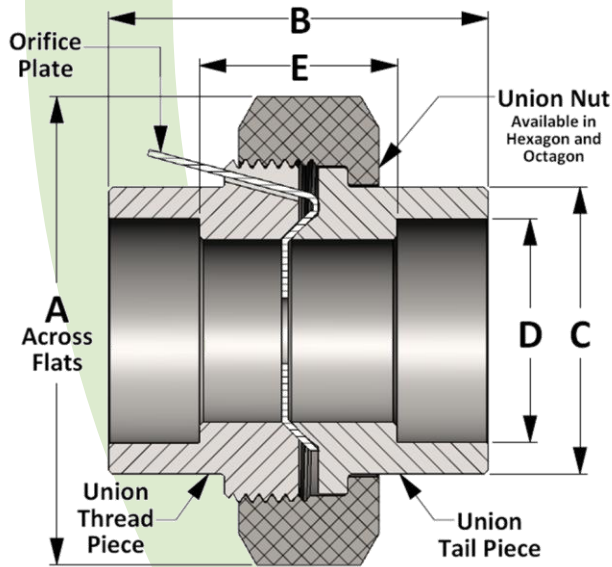
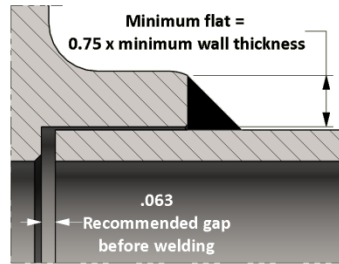
See our flow rate chart for orifice union hole sizes

**Sizes:** 1/8" - 3" in CL 3000 • 1/8" - 2-1/2" in CL 6000

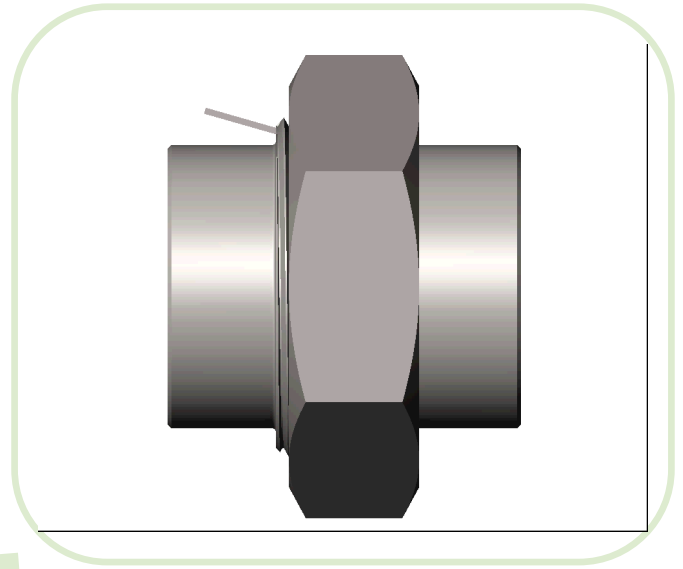
Also available in reducing pipe sizes and tube sizes

Socket Weld Pressure Class	Pipe Schedule
Class 3000	S80/XH
Class 6000	S160

## Welding Gap and Minimum Flat Dimension for Socket Weld Fittings



Animated Model



All dimensions are in inches • Weights are based in Carbon Steel

CLASS 3000 – FIGURE NO. 13030

PIPE SIZE	1/8	1/4	3/8	1/2	3/4	1	1-1/4	1-1/2	2	2-1/2	3
A	1.375	1.375	1.625	1.813	2.250	2.562	3.063	3.438	4.063	4.875	5.688
B	1.725	1.725	1.881	2.006	2.318	2.506	2.818	3.068	3.443	4.006	4.318
C	0.865	0.865	1.025	1.235	1.465	1.795	2.165	2.425	2.965	3.615	4.305
D	0.426	0.560	0.693	0.859	1.071	1.335	1.682	1.922	2.410	2.910	3.536
E	0.813	0.813	0.906	0.906	1.094	1.156	1.344	1.468	1.593	2.156	2.218
LBS	0.40	0.38	0.52	0.73	1.19	1.66	2.66	3.42	5.36	9.12	12.58

CLASS 6000 – FIGURE NO. 16030

PIPE SIZE	1/8	1/4	3/8	1/2	3/4	1	1-1/4	1-1/2	2	2-1/2	3
A	1.375	1.625	1.813	2.250	2.562	3.063	3.438	4.063	4.875	5.688	---
B	1.725	1.881	2.006	2.318	2.506	2.818	3.068	3.443	4.006	4.318	---
C	0.865	1.025	1.235	1.465	1.795	2.165	2.425	2.965	3.615	4.305	---
D	0.426	0.560	0.693	0.859	1.071	1.335	1.682	1.922	2.410	2.910	---
E	0.813	0.906	0.906	1.094	1.156	1.344	1.468	1.593	2.156	2.218	---
LBS	0.48	0.56	0.75	1.35	2.01	3.17	3.92	6.60	10.12	14.00	---

See our flow rate chart for orifice union hole sizes: [http://www.pennusa.com/products/orifice\\_union\\_hole\\_flow\\_rate\\_chart.php](http://www.pennusa.com/products/orifice_union_hole_flow_rate_chart.php)